



Independently Researching What Is Faster, Easier, Better, and Less Expensive

How to read and understand this report!

- The color coding is important to understand this Buying Guide.
- All products in the report have had independent CR clinical research: in-vitro, in-vivo or both.
- Companies do not pay CR for product evaluations.
- This report is a listing of products that are clinically successful.
- The back page of the report has an index to help you search quickly.
- This Buying Guide is a highly useful adjunct for practitioners selection of products and should be used when deciding what products to trust and purchase.



THE BEST PRODUCTS FOR 2026

Clinically Tested ★ Clinically Proven

This guide includes the highest-rated products CR evaluated during 2025 (see page 19 for testing methods). It also includes references to articles published by CR in 2025. **This is not an all-inclusive list of successful dental products.** Some categories are too broad and may not list proven products. For many other excellent products not mentioned, please review previous CR Buying Guides and Clinicians Reports at CliniciansReport.org.

CR BUYING GUIDE

Color-Coded Product Categories:

- ▶ **STANDOUT PRODUCTS** are marked with a red star (★).
- ▶ **PROVEN PRODUCTS** that are commonly used and accepted by CR Evaluators are purple.
- ▶ **NEW PRODUCTS RATED HIGHLY** in CR testing are blue.
- ▶ **INDEX** is on page 20.



Clinicians Report (CR) is Celebrating 50 Years of Dedication to Dentistry

- ◆ Original and only non-profit, wholly independent organization.
- ◆ Laboratory and clinical studies.
- ◆ Objective evaluations of products, equipment, and new advances.
- ◆ Discover and report those that are “faster, better, higher quality, and less expensive.”
- ◆ Funded by dentists to educate the dental team on how they can best serve patients and retain enthusiasm for this fulfilling profession.



50th Anniversary Gala
Dinner & Fundraiser
Park City, Utah
February 6, 2026

CR'S BEST PRODUCTS OF ALL TIME!

See also *Clinicians Report* June 2025: "What are Some of CR's Best Products of All Time?"

CR Note: After 50 years of product testing, the following outstanding, practice-transforming products currently available are truly among *some* of CR's best products of all time.

Best of All Time:

- ★ **Astringedent, Ultradent**
- ★ **BruXZir (3Y), Glidewell**
- ★ **GLUMA, Kulzer**
- ★ **IPS e.max, Ivoclar**
- ★ **Isolite Pro, Zyris**
- ★ **LOCATOR, Zest Dental Solutions**
- ★ **Luxator, Directa**
- ★ **PreviDent 5000 Plus, Colgate**
- ★ **Septocaine, Septodont**
- ★ **VALO, Ultradent**
- ★ **VITA Classical Shade Guide, VITA**



ANESTHETICS & ACCESSORIES

Local Anesthesia

Proven Products:

- ★ **Articaine, Various Companies** (fast onset, effective, most used)
- ★ **Septocaine, Septodont** (original brand)
- **Bupivacaine, Various Companies**
- **Lidocaine, Various Companies**
- **Mepivocaine, Various Companies**



★ **Septocaine, Septodont**

CR BEST OF ALL TIME. Articaine hydrochloride 4% is a proven to be **more effective than lidocaine** and not to cause paresthesia more than lidocaine, which was an initial allegation. Less volume is needed.

\$83/Box of 50

See also *Clinicians Report* June 2025



BufferPro, Septodont (Manufactured by Premier Dental Products)

Easy-to-use, one-step, single-use, fast buffer for local anesthetic (LA). Easier to add to anesthetic capsule than other methods.

\$90/Box of 25 Capsules (\$3.60/Capsule)

See also *Clinicians Report* April 2025

DIAGNOSIS AND TREATMENT PLANNING

Cameras: Clinical and Accessories

Proven Products: Single Lens Reflex and Point and Shoot

- **EyeSpecial, Shofu**
- **Various models from the following companies**
- Dine Corp
- PhotoMed

Cameras: Intraoral video

See also *Clinicians Report* January 2025: "Are Low-Cost Intraoral Cameras Right for Your Practice?"

Proven Products:

- ★ **MouthWatch, MouthWatch** (lower cost)
- **CS1500, Carestream Dental**
- **C20 and C50, Acteon**
- **CamX Triton, CamX Elara, and CamX Spectra, Air Techniques**

★ **STANDOUT PRODUCTS**

Proven Products (continued):

- **DEXcam, DEXIS**
- **DiagnoCam, KaVo**
- **Icam and QuickCam, Video Dental Concepts**
- **Iris X90 and PXL, Digital DOC**



★ **MouthWatch (Proven Product), MouthWatch**

Intraoral camera with fixed focus lens and one light setting suitable for patient show-and-tell. **Good picture for lower cost camera.**

\$299/Camera

See also *Clinicians Report* January 2025



MouthWatch Plus+, MouthWatch

Intraoral camera with **higher resolution (HD1080P) lens and four light options** (hi, med, low, off). Excellent–Good picture for lower cost camera than premium brands.

\$999/Camera

See also *Clinicians Report* January 2025



WOLfcam, Dental Savings Club

Intraoral camera with **higher resolution lens and on or off light controls**. Suitable for patient show-and-tell. Excellent–Good picture for low-cost camera.

\$279/Camera

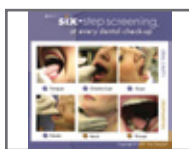
See also *Clinicians Report* January 2025

Oral Cancer Screening

CR Note: Thorough systematic visual and tactile examination of the entire oral cavity along with the head and neck remains the standard of care. Biopsy with histological examination remains the only tool for definitive diagnosis. Oral cancer screening devices may serve as an adjunct to a good clinical exam and represent an effort at earlier diagnosis of abnormal tissues.

Proven Products:

- **Bio/Screen, AdDent**
- **Fusion-DOE, DentLight**
- **IdentaFi, DentaleZ Group**
- **VELscope Vx, LED Dental**
- **ViziLite PRO, Clinician's Choice (division of DenMat)**



Six-Step Screening, SixStepScreening.org

Concise photographic guidelines on oral cancer screenings to **educate patients and encourage practitioners**. Shipping included.

\$80/200 Cards; \$10–\$30/Poster (different sizes)

See also *Clinicians Report* November 2025

ENDODONTICS

Burs



Munce Discovery Burs, Engineered Endodontics

Unique bur with **longer-than-surgical-length shank**, and durable, stiff, narrow-diameter shaft and head for control, access, and visibility. Find calcified and hidden canals easily

\$14.50/Bur; \$58/4 Pack; \$85/6 Pack

See also *Clinicians Report* November 2025

PROVEN PRODUCTS

HIGHLY RATED NEW PRODUCTS

Endodontic Handpieces

Proven Products:

- **EdgeApex HP** (Adaptive Torque Reverse), **EdgeEndo** (lower cost)
- **Endo-Express** (reciprocating), **EDS (Essential Dental Systems)**
- **EndoSequence 2** (rotary), **Brasseler USA**
- **ProMark** (rotary and reciprocating), **Dentsply Sirona**
- **Tri Auto ZX2+** (rotary, auto-reverse, locator), **Morita**
- **Woodpecker EndoFree** (rotary or reciprocating), **Vakker Dental** (lower cost)
- **Woodpecker Endo Smart+** (rotary or reciprocating), **GoldenDent** (lower cost)

Sealers/Endodontic Cements

See also *Clinicians Report* June 2025: “Are Calcium Silicate Endo Sealers an Improvement?”

CR Note: Major change is shifting to MTA chemistries.

Proven Products:

- **★Endosequence BC Sealer** (calcium silicate), **Brasseler USA** (most used)
- **BIO-C SEALER** (calcium silicate), **Angelus**
- **BioRoot RCS** (calcium silicate) and **BioRoot Flow** (calcium silicate), **Septodont**
- **EdgeBioCeramic** (calcium silicate), **EdgeEndo**
- **Endo-Eze MTA Flow Cement** (MTA) and **EndoREZ** (methacrylate resin), **Ultradent**
- **NeoMTA 2** (MTA), **Avalon Biomed**



★EndoSequence BC Sealer, Brasseler USA

Injectable root canal sealer **with bioceramic nanotechnology** (dicalcium and tricalcium silicate, calcium hydroxide). Premixed syringe delivery has made this canal filler very popular.

\$222/2 gram Syringe

See also *Clinicians Report* June 2025

ESTHETIC DENTISTRY

See also *Orthodontics* on page 5; *Prosthodontics, Fixed/Removable* on pages 7–12; and *Restorative/Operative* on pages 13–17

Bleaching

Proven Products: At-Home Professional Tooth Whitening

- **Opalescence Home Advanced** (10% or 15% HP), **Ultradent**
- **Pola** (various 7.5%–22% CP/HP), **SDI**
- **10–15% carbamide peroxide**, **Various Companies**

Proven Products: In-Office

- **Opalescence Pro**, **Ultradent**
- **Pola Office+ and Pola Rapid**, **SDI**

Proven Products: Mass Market

- **Crest White Strips** (6%, 10%, or 14% HP), **Procter & Gamble**
- **Opalescence Go** (10% or 15% HP), **Ultradent**



Opalescence Home Advanced, Ultradent

Newly designed application trays for popular, at-home tooth whitening. Mint and watermelon.

\$320.50/6 Kits (\$53.25/Kit of Ten Treatments)

See also *Clinicians Report* August 2025

Shade Taking

Proven Products:

- **★VITA Toothguide 3D-Master** and **VITA Classic Shade Guide**, **VITA North America**
- **Rite-Lite Pro** (chairside color corrected light), **AdDent**

Technology for Shade Matching:

- **Color intraoral scanners** (see page 12)
- **Intraoral cameras** (see page 2)
- **ShadeWave, ShadeWave** (software and accessories)
- **Smartphones**
- **VITA Easyshade V**, **VITA North America**

Veneers

See also *Cements, Resin: Esthetic in Prosthodontics, Fixed/Removable* on pages 7–12



VeneerNow, Premier Dental Products

Injection molds that **can help dentists create direct resin-based composite veneers**. Molds may be used with flowable or conventional composite.

\$239/Starter Kit

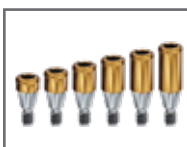
See also *Clinicians Report* September 2025

IMPLANTS: PROSTHODONTICS

Attachments and Accessories

Proven Products:

- **★LOCATOR Implant Attachment**, **Zest Dental Solutions** (most used)
- **LOCATOR FIXED**, **Zest Dental Solutions**



★LOCATOR (Updated Proven Product), Zest Dental Solutions

CR BEST OF ALL TIME. This system that allows attachment of prosthesis to four or more implants in an arch **without need to screw into implant** dominates the overdenture implant attachment market.

\$2,617/Bronze Starter Package (3 Arches)

See also *Clinicians Report* June 2025

IMPLANTS: SURGERY

See also *Clinicians Report* October 2025: “Immediate Implant Loading is Changing: What Does CR Say?”

Implants, Titanium

CR Note: Small diameter implants have not experienced peri-implantitis like conventional diameter implants.

Proven Products: Conventional Diameter

- **★NobelActive Implant** (TiUnite treated), **Nobel Biocare**
- **★SLActive** (nitrogen conditioned and saline storage), **Straumann**
- **★Simply Iconic, Implant Direct** (most popular with general dentists, low cost)
- **Various from the following companies**
 - Bicon
 - BioHorizons
 - Dentsply Sirona
 - Nobel Biocare
 - Straumann
 - ZimVie

Proven Products: Small Diameter

- **Various from the following companies**
 - **★Intra-Lock** – **Sterngold**
 - Glidewell – **Zest Dental Solutions**
 - Noris Medical

Proven Products: Tissue-Level

- **Various from the following companies**
 - Implant Direct
 - Paragon
 - Straumann
 - ZimVie

INFECTION CONTROL/OSHA/EPA COMPLIANCE

Visit [CliniciansReport.org](https://www.cliniciansreport.org) → Complimentary Information for a list of tested and proven infection control products, including:

- Air Purification
- Dental Unit Waterline Validation
- Eye Protection
- Face Masks
- Gloves
- Hand Antiseptics
- Instrument Cleaning and Disinfection
- Pre-Treatment Rinse
- Protective Clothing
- Sterilizer Monitors
- Sterilizers
- Surface Disinfectants

See also *Clinicians Report* April 2025: “Five Years After COVID: How Has Dentistry Changed?”

Air Compressor and Central Vacuum Pump

Proven Products:

- Various models from the following companies
 - Air Techniques
 - DentalEZ
 - Midmark

Air Purification

CR Note: 53% of clinicians surveyed regularly use air filters/purifiers in their practice. Purifiers help patients and staff “feel safe,” but they do little to protect clinicians during dental treatment.

Proven Products:

- ★ **ECM Phantom**, Gordon Cleanroom Inc. (not affiliated with Gordon J. Christensen) (effective downdraft HEPA filter),



COBALT Air Purification System, Surgically Clean Air

Ceiling mounted air cleaning system with 28.5 air changes in an hour for a 10X10X9 foot operatory. Quiet operation and HEPA filtration.

\$2,495/2'×2' size; \$3,489/2'×4' size

See also *Clinicians Report* June 2025



JADE 2.0 Air Purifier, Surgically Clean Air

Stand-alone air purification system with efficient HEPA filtration, quiet operation and proximity sensor that adjust speed easily. Cylinder 12.4 inches deep X 35.2 inches high.

\$2,495/2'×2' size; \$3,489/2'×4' size

See also *Clinicians Report* June 2025

Eye Protection

CR Note: 25% of clinicians surveyed have adopted face shields.

Proven Products:

- ★ **Loupes Face Shield**, UltraLight Optics (low cost)
- **The Loupe Shield**, Ambience PPE

Protective Clothing

CR Note: 33% of clinicians surveyed have modified their use of surgical gowns. 12% use longer length jacket/gown, 11% change jacket/gown more frequently.

Proven Products:

- ★ **Knee Length Disposable Lab Coat and Lab Jacket Disposable**, Sara Glove
- **MedFlex Premium Lab Coat**, First Medica
- **Safewear Hipster Jacket**, Medicom
- **TiScrubs**, TiScrubs
- **Vestex Clinic Jacket**, ProSafe Products

Sterilizer Monitors

See also *Clinicians Report* March 2025: “Autoclave Spore Testing: Are You and Your Patients Safe?”

Proven Products:

- ★ **3M Attest Mini Auto-Reader Incubator used with 3M Attest Ampule #1492V**, Solventum
- **ConFirm Rapid Read 20 Minute Reader**, HuFriedyGroup
- **Mini-Bio**, Tuttnauer



★3M Attest Mini Auto-Reader 490M, Solventum

Biological incubator and reader with excellent combination of features, performance, and low cost. CR Choice for ultra-rapid spore testing.

\$750/Incubator-reader; \$5.85/Test Vial

See also *Clinicians Report* March 2025

Sterilizers

Proven Products:

- ★ **Maxima Turbo Class B Sterilizer**, Henry Schein
- ★ **STATIM G4 (5000 and 2000) Rapid**, SciCan
- ★ **T-Edge 11 and Various**, Tuttnauer
- ★ **Various**, Midmark

Surgical Caps

CR Note: 18% of clinicians surveyed have adopted head coverings.

Proven Products:

- **Disposable**, Various Distributors
- **Kai Kap**, Twice as Nice Uniforms

Surgical Masks

CR Note: 48% of clinicians surveyed have changed their use of surgical masks since COVID. 20% use higher level than previously worn.

Proven Products:

- ★ **Critical Cover PFL (Positive Facial Lock) with Magic Arch** (soft pleated mask), **AlphaProTech** (excellent filter and best fit to face)
- ★ **Isolator Plus N95 Mask** (soft pleated mask), **Crosstex**

Ultrasonic Cleaners

Proven Products:

- **BioSonic**, Coltene
- **Resurge**, Dentsply Sirona
- **Various**, L&R

LABORATORY TECHNOLOGY

Crowns

See *Prosthodontics* on page 9

3D Printing

See also *Clinicians Report* September 2025: “Your Dental Lab is 3D Printing. Should You Be As Well?”

CR Note: 3D printing allows clinicians to use digital impressions and design software to create and print study models, diagnostic casts, occlusal splints, surgical guides, provisional restorations, orthodontic aligners, etc., in their own office. Training and equipment for washing, curing, trimming, and polishing post-processing steps also available. Many manufacturers offer in-office dental 3D printing solutions including: 3D Systems, Asiga, DMG, Formlabs, Kulzer, SprintRay, etc.

Proven Products:

- **Form 4B, Form Wash, and Form Cure**, Formlabs (easy to use)
- **Max2**, Asiga
- **SprintRay Pro S**, SprintRay

OPERATIVE DENTISTRY

See *Restorative/Operative* on pages 13–17

ORAL AND MAXILLOFACIAL SURGERY

See *Surgery: Oral/Maxillofacial* on pages 18–19

ORAL PATHOLOGY

See *Surgery: Oral/Maxillofacial* on pages 18–19

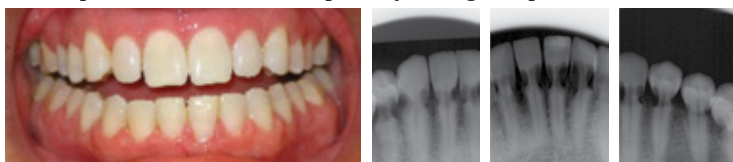
ORTHODONTICS

See also *Clinicians Report* May 2025: “**Orthodontic Extrusion: A Simple, Real-World Way to Save Teeth!**”

CR Note: Dentists should consider learning to accomplish (or refer) orthodontic extrusion and suggest this to patients when discussing treatment options.

Aligners

CR Note: Invisalign and later Clear Correct promote definitive clinical techniques backed by research, and both have provided a service that has subsequently been proven to be desirable and effective. Dentists need to be aware of obvious challenges of direct-to-consumer aligners. Minor to moderate problems with all aligner systems are common, and severe problems such as external absorption can occur with rapid tray changes/rapid movement.



Severe external absorption following unsupervised direct-to-consumer aligner orthodontic treatment.

Proven Products:

- ★ **Invisalign, Align Technology** (most used, effective)
- **ClearCorrect, ClearCorrect**
- **Sure Smile, Dentsply Sirona**

Interproximal Reduction and Finishing

Proven Products:

- ★ **GC New Metal Strip, GC America**
- ★ **Needle Diamond Burs 8392.016 (F), Brasseler USA**
- ★ **QwikStrip, QwikStrips**
- **ContactEZ IPR Strips, Directa**
- **Diamond Strips, Horico** (sold through distributors)
- **MIR 2.0** (interproximal reduction), **Microdont/Pearson**



NeoDiamond IPR Strips, Microcopy

Lower-cost, thin, metal interproximal strip with four grits and three widths (2.5 mm, 3.7 mm, 6.0 mm). Flexibility follows natural curve of dentition while finishing.

\$39.95/10 Strips (\$4/Strip)

See also *Clinicians Report* January 2025

PEDIATRIC DENTISTRY

See *Restorative/Operative* on pages 13–17

Silver Diamine Fluoride (SDF)

Proven Products:

- ★ **Advantage Arrest, Elevate Oral Care**
- **Riva Star Aqua, SDI**
- **SilverSense SDF, Centrix**

PERIODONTICS

See *Preventive Dentistry/Oral Hygiene* on pages 6–7

Tissue Regeneration

Proven Products:

- **Emdogain** (tissue regeneration), **Straumann**
- **IntraSpin System** (patient's Leukocyte and Platelet-Rich Fibrin [L-PRF], Platelet-Rich Plasma [PRP]), **BioHorizons**

PHARMACOLOGY

Pain Medications

CR Note: A combination of ibuprofen (400–600mg) and acetaminophen (500mg) every 6 hours provides effective pain relief comparable to opioids without the complications or dangers of opioids. Combining analgesics that work differently provides more pain relief than a single analgesic can on its own.

Proven Products:

- ★ **Acetaminophen** (e.g., Tylenol) most used
- ★ **Ibuprofen** (NSAIDs, e.g., Advil;) most used
- **Naproxen**, (NSAIDs, e.g., Aleve)

PRACTICE MANAGEMENT

See also *Clinicians Report* July 2025: “**Can a Start-Up Dental Practice be Successful Today?**”

CR Note: Although this article is aimed at the dentist creating their first practice, any of these same concepts apply to a dentist or dental group looking to start a new “additional” practice in a new location or to refurbish an existing practice.

See also *Clinicians Report* September 2025: “**How to Attract Ideal Patients**” and *Clinicians Report* October 2025: “**Reducing Material Costs without Sacrificing Patient Care?**”

Education: Patient

Proven Products:

- **ADA Brochures, ADA** ada.org
- **Cosmetic C&B Model (TRM.348)** and various other models, **Kilgore**
- **Dental Documents Booklet, Gordon J. Christensen Practical Clinical Courses**
- **Six-Step Screening, SixStepScreening.org**
- **Stepping Stones to Success Brochures, Stepping Stones to Success**
- **The Grossest, Truly Terrifying, But Utterly Awesome Mouth Book** (Updated Proven Product), **Practicon**

Education: Self and Team

Proven Products:

- ★ **CR Dentistry Update Courses** and **Clinicians Report** (monthly publication), **CR Foundation** (independent, current)
- ★ **PCC DVDs and Courses, PCC Dental**
- **Six-Step Screening, SixStepScreening.org**

Practice Management Software

Proven Products:

- ★ **Open Dental, Opidental**
- **Dentrix, Henry Schein One**
- **Eaglesoft, Patterson Dental**
- **MacPractice, MacPractice**
- **Softdent** and **PracticeWorks, Carestream**

PREVENTIVE DENTISTRY/ORAL HYGIENE

Air Powder Polishers

See also *Clinicians Report* April 2025: “**Air Polishers: New Advances Entice Dentists and Hygienists**”

CR Note: CR considers air powder polishers (APP) to be indispensable equipment for faster and more thorough patient care. It is superior to prophy polishing as it reaches interproximally. APP also increased quality of dental sealants, implant maintenance, and some composite restorations on near-flat surfaces, making them useful for dentists and hygienists alike.

Proven Products:

- ★ **AIR-FLOW Master**, EMS (most controlled spray)
- **AIR-FLOW HANDY 3.0 Classic**, EMS (lower cost)
- **Cavitron Prophy Jet Plus**, Dentsply Sirona
- **PROPHYFlex**, KaVo (lower cost)
- **Woodpecker PT-B**, Vakker



★ **Airflow Master** and **Airflow One**, EMS

Premium air polisher **with more precision and control than other brands**. Has five water temp settings and a special nozzle design. Includes three air polish handpieces, one perio handpiece, and three piezo handpieces. Using non-manufacturer powders voids warranty. Master also has an ultrasonic scaler.

\$15,354/Airflow Master; \$9,045/Airflow One

See also *Clinicians Report* April 2025



Woodpecker PT-B, Vakker

High performance device with lower cost. Has five water temp settings and **endo capabilities**. Includes two piezo handpieces, two air polishing handpieces, and two endo tips.

\$5,500/Device

See also *Clinicians Report* April 2025



Dentifrices/Toothpastes

Proven Products: Wellness-Oriented

- **Correct MMP Toothpaste** (nano hydroxyapatite), **Correct Oral Care**
- **Tooth & Gums Essentials** (essential oils and herbs), **Dental Herb Company**



CORRECT MMP Inhibiting Hydroxyapatite Toothpaste, Correct Oral Care

Natural antioxidants from pomegranates, sumacs, and peony flowers (PolyLeaf) inhibit **MMPs to normal levels** protecting oral tissues (anti-inflammatory). It has hydroxyapatite and perlite (gentle dental abrasive), and is fluoride and sodium lauryl sulfate (foaming agent) free.

\$22/111 gm Tube

See also *Dental Hygiene Clinicians Report* March/April 2025

Proven Products: Over-the-Counter Desensitizing

- ★ **Sensodyne Repair & Protect**, Haleon (most effective)

Proven Products: Rx Fluoride Dentifrices

- ★ **PreviDent 5000 Plus and Booster**, Colgate (most effective)
- **Allday 5000 Dry Mouth Toothpaste**, Elevate Oral Care
- **MARK3 Enamel Care 1.1% Sodium Fluoride Toothpaste** (Rx), Sold through distributors



★ **PreviDent 5000 Plus and Booster**, Colgate

CR BEST OF ALL TIME. Rx neutral pH 1.1% sodium fluoride dentifrice. Provides effectiveness of prescription-strength fluoride and convenience of an everyday toothpaste. Demonstrated decreasing demineralization and excellent for high caries patients.

\$17/Tube

See also *Clinicians Report* June 2025

Denture and Removable Appliance Cleaner



Liquid Crystal, Dr. B Dental Solutions

Concentrated solution for soaking and cleaning removable appliances or removable prostheses. **Removes stains, cleans and freshens appliances.**

\$28/12 ounce Pump Bottle

See also *Clinicians Report* July 2025

Fluoride

See also *Clinicians Report* November 2025: “**Fluoride 2025: What Clinicians Need to Know**”

Proven Products: Varnish

- **Armour Rx**, Massco Dental
- **FluoroDose**, Centrix
- **Iris Varnish**, Benco
- **VarnishAmerica Original and White**, Young Specialties



Profisil Fluoride Varnish, Kettenbach

Varnish with 5% sodium fluoride in **clear dimethicone gel (vs. rosin)**. Mild flavors are mint, berry, and unflavored. Packs have ample amount (0.5 ml) of product to cover all teeth of both arches.

\$66/30 Blister Packs (\$2.20 Each)

See also *Clinicians Report* May 2025



3M Clinpro Clear Fluoride Treatment, Solvntum

Varnish with 2.5% sodium fluoride in water-based carrier. It is **clear** and has smooth application. Available in mint and watermelon flavors. **Similar or higher F uptake compared to 5.0% brands.**

\$132.50/50 Packs with Applicator (\$2.65 Each)

See also *Clinicians Report* August 2025

Interdental Cleaners/Floss

See also *Dental Hygiene Clinicians Report* January/February 2025: “**Which Interdental Brushes and Picks Should Your Patients Use?**”

Proven Products:

- **Aquarius Water Flosser WP-660**, Waterpik
- **GUM Proxabrush Go-Betweens Cleaners** and **Soft-Picks Advanced**, Sunstar
- **Interdental Brushes**, **EasyPick**, and **Implant Care Kit**, TePe USA
- **Opalpix**, Ultradent
- **Oral-B Glide Floss**, Procter & Gamble
- **Piksters**, Erskine Dental
- **RotaPoint**, Clinician's Choice (division of DenMat)



GUM Twisted Mint Floss Picks, Sunstar

This new floss pick has twisted thread and mint flavor on a disposable ergonomic pick with flat handle. **Effectively removes the plaque in interdental spaces** without shredding or sagging.

\$19.30/48 Packs of 3 (40¢/3-Pack)

See also *Clinicians Report May 2025*

Oral Rinses

See also *Xerostomia on page 7*

CR Note: Some clinicians choose alcohol-free rinses to avoid possible link between alcohol use and oral cancer.

Proven Products: Pre-Treatment Rinse

- ★ **ioRinse RTU** (molecular iodine), **ioTech International** (COVID-19 kill)
- ★ **3M Peridex** (CHG, alcohol), **Solventum** (most used, effective)
- **PerioGard** (CHG, alcohol), **Colgate Professional**

Proven Products: Routine Use

- ★ **LISTERINE** (essential oils, alcohol), **Kenvue**
- ★ **StellaLife VEGA Oral Care Rinse** (homeopathic compounds), **StellaLife**
- ★ **Tooth and Gums Tonic** (essential oils and herbs), **Dental Herb Company** (natural and highly effective)
- **CloSYS Mouthrinse** (various, chlorine dioxide), **Rowpar Pharmaceuticals**
- **Crest Pro-Health Rinse** (cetylpyridinium chloride), **Procter & Gamble**
- **Mouth Rinse & Spritz** (homeopathic compounds), **Essential Smiles**

Sealants

See also *Resin-Based Composites, Flowables on page 16*

CR Note: Flowable resins are liked by many clinicians for ease of use but are best suited for more durable sealants than traditional sealants. Flowables are also useful for small restorations, temporary crown repairs, etc. Although formulations have improved, in general they still have higher shrinkage and lower physical properties than conventional composites, making them less than ideal for use as liners under restorations or as enamel replacement layers in high-wear, large, or stress-bearing restorations.

Proven Products: Flowable Resins for More Durable Sealants

- **Beautiful Flow Plus**, **Shofu**
- **G-aenial Universal Flo**, **GC America**
- **Tetric EvoFlow**, **Ivoclar**
- **3M Filtek Supreme Ultra Flowable**, **Solventum**

Proven Products: Resin-Based Composites for Most Durable Sealants

- **Herculite Ultra**, **Kerr**
- **3M Filtek Supreme Ultra**, **Solventum**

Proven Products: Sealants

- ★ **GC Fuji Triage EP** (highest fluoride release), **GC America**
- **3M Clinpro Sealant**, **Solventum**
- **UltraSeal XT hydro**, **Ultradent**

Toothbrushes

CR Note: CR and others have shown that many automated toothbrushes remove plaque far more efficiently than traditional manual toothbrushes.

Proven Products: Automated Toothbrushes

- ★ **Oral-B** (various), **Procter & Gamble**
- ★ **PRO-SYS VarioSonic Plus+**, **Benco** (lower cost)
- ★ **Sonicare**, **Philips**
- **ARU**, **Ashtel Studios** (long charge, lower cost)



★Pro-SYS VarioSonic Plus+ (Updated Proven Product), Benco

Improved “sonic” power toothbrush has **advanced brushing modes**, a two-minute timer, five unique brush heads, an intuitive pressure sensor, and long battery life.

\$45 Each

See also *Clinicians Report March 2025*



GUM Sonic Powered Toothbrush, Sunstar

Reasonably priced, over-the-counter powered toothbrush with thin soft tapered bristles, ergonomic handle, and replicable AAA battery powered.

\$14.00/Toothbrush

See also *Clinicians Report June 2025*

Proven Products: Manual Toothbrushes

- **Various models from the following companies**
 - **Colgate**
 - **Johnson & Johnson**
 - **Oral-B/Procter & Gamble**
 - **Sunstar**



GUM Technique Deep Clean, Sunstar

Manual toothbrush with **thin, soft, gentle tapered bristles**. The ergonomic handle has comfortable easy grip features.

\$1.29/Toothbrush

See also *Clinicians Report June 2025*

Xerostomia

CR Note: Xerostomia is a significant clinical challenge usually caused by medications. Products generally provide short-term relief of symptoms only.

Proven Products:

- ★ **Allday Dry Mouth Gel**, **Elevate Oral Care**
- ★ **StellaLife VEGA Oral Care Peppermint Gel and StellaLife VEGA Oral Care Rinse** (homeopathic compounds), **StellaLife**
- **Biotene Products**, **HalEon**
- **OraCoat XyliMelts**, **Quest Products**



Salivea Dry Mouth Care, Laclede

Well-received mouthwash and toothpaste formulated with natural enzymes and enriched with moisturizers. **Soothes irritated tissues for a healthy oral environment.**

\$11/Dentifrice (4.3 oz Tube)

\$15/Mouthwash (16 oz Bottle)

\$12/Spray (1.5 oz Each)

See also *Clinicians Report January 2025*

PROSTHODONTICS, FIXED/REMOVABLE

Cement

See also *Clinicians Report January 2025*: “**Should You Be Using A Fluoride-Releasing Cement**” and *Clinicians Report August 2025*: “**Crown Cementation: Best Choices and Clinical Steps**”

Cement, Glass Ionomer

CR Suggestion: Glass ionomer (GI) cements should be considered for patients with moderate to high caries.

CR Note: Points to consider when incorporating new GI cements:

- GI is more cariostatic than RMGI and resin cements.
- GI has unique chelating chemistry that bonds to tooth.
- GI has almost no dimensional change on setting.
- Delivery systems are powder/liquid or triturator capsules.
- GI cements are used heavily in other countries.
- GI fell out of popularity in North America in the early 1990s because practitioners reported increased sensitivity. However, CR has shown sensitivity can be reduced or eliminated with two one-minute applications of a glutaraldehyde/HEMA primer. (See Desensitizers page 14.)

Proven Products:

- GC Fuji I, GC America
- Meron AC, VOCO
- Riva Luting, SDI
- 3M Ketac Cem, Solventum



CX-Plus, Shofu

Glass ionomer cement in capsules and triturator mix or powder/liquid hand mix delivery. Low film thickness (15 µm). **CR measured high initial fluoride release.**

\$167/Kit, Powder/Liquid

See also Clinicians Report January 2025

Cement, Provisional

CR Note: Clinicians may select provisional cement on the basis of reducing sensitivity (eugenol-based). In CR tests, eugenol-based provisional cement had no significant influence on the shear bond strength of final cements with thorough cleaning of preparations.

Proven Products: Temporary Clear Esthetic

- ★ ClearTemp LC (resin, veneer only), Ultradent
- ★ Temp-Bond Clear with Triclosan (resin, non-eugenol), Kerr
- NexTemp Clear (resin), Premier Dental
- Telio Link (resin, non-eugenol), Ivoclar
- TempoCem ID (non-eugenol), DMG America

Proven Products: Temporary Resin

- ★ NexTemp and NexTemp Clear (resin, non-eugenol), Premier Dental
- E.T.C. (resin, non-eugenol), Parkell

Proven Products: Temporary Non-Resin Cement

- ★ Temp-Bond and TempBond NE (zinc oxide with or without eugenol), Kerr
- Fynal and IRM (zinc oxide eugenol), Dentsply Sirona
- GC Fuji TEMP LT (GI) and GC TEMP ADVANTAGE (zinc oxide, non-eugenol), GC America
- TempoCem (zinc oxide with or without eugenol), DMG America
- 3M Durelon (polycarboxylate), Solventum
- 3M RelyX Temp E and RelyX Temp NE (zinc oxide, non-eugenol), Solventum
- UltraTemp (polycarboxylate), Ultradent



GC Fuji TEMP LT, GC America

Conventional GI provisional cement from two pastes dispensed from the paste pak cartridge system and mixed by hand. **CR measured highest initial fluoride release.**

\$295/2 Pack (\$20.49/ml)

See also Clinicians Report January 2025

Cement, Resin: Adhesive (with Separate Self-Etch Primer)

Proven Products:

- ★ C&B Metabond Quick!, Parkell (well known especially for salvage)
- ★ Multilink Automix, Ivoclar (most used)
- ★ Panavia F2.0 and Panavia V5, Kuraray Noritake
- ESTECCEM II, Tokuyama
- 3M RelyX Ultimate, Solventum

Cement, Resin: Esthetic, Veneer (with Separate Adhesive and Light Cure)

Proven Products:

- ★ PermaShade, Ultradent (lower cost)
- ★ Variolink Esthetic, Ivoclar
- Calibra Veneer, Dentsply Sirona
- Insure, Cosmedent
- NX3, Kerr
- Panavia Veneer, Kuraray Noritake
- 3M RelyX Veneer, Solventum

Cement, Resin: Self-Adhesive (No Separate Primer)

Proven Products:

- ★ Panavia V5, Kuraray Noritake
- ★ 3M RelyX Universal Resin Cement, Solventum (improved on RelyX Unicem 2)
- Calibra Universal, Dentsply Sirona



Beautilink SA, Shofu Dental

Self-adhesive, dual-cured cement with bioactive “Giomers” filler technology. **Specifically formulated for zirconia.** CR measured some fluoride release. Three shades: clear, ivory, and opaque.

\$135/5 ml syringe (\$27/ml)

See also Clinicians Report August 2025



Calibra Universal+ (Updated Proven Product), Dentsply Sirona

Well-known universal resin cement with **improvements in tack-cure cleanup** and adhesive compatibility. CR measured some fluoride release.

\$215/2 Packs (\$23.89/gram)

See also Clinicians Report June 2025

Cement, Resin-Modified Glass Ionomer and Similar

Proven Products: RMGI

- ★ GC Fuji PLUS (triturator mixed) and GC FujiCEM Evolve (RMGI) (easy placement, cleanup, higher radiopacity), GC America
- ★ 3M RelyX Luting Plus (RMGI), Solventum
- Breeze RMGI, Pentron
- Meron Plus QM, VOCO
- Nexus RMGI, Kerr

Proven Products: Resin-Modified Calcium Aluminate and GI

- CALIBRA BIO (calcium aluminate and GI), Dentsply Sirona
- Ceramir (calcium aluminate and GI), Directa
- Riva Cem, SDI
- ZirCAD Cement, Ivoclar



★GC FujiCEM Evolve, GC FujiCEM Evolve

RMGI cement in dual-barrel syringe. Syringe delivery with a tack-cure feature and high radiopacity. **CR measured high initial fluoride release.**

\$149/5 ml Syringe

See also Clinicians Report January 2025



★3M RelyX Luting Plus (RMGI), Solventum

RMGI cement in dual-barrel syringe or clicker dispensing. Self curing with an option for tack light cure to expedite cleanup. **CR measured high initial fluoride release.**

\$141/8.5 gram Syringe

See also Clinicians Report January 2025



Breeze RMGI, Pentron

RMGI cement in dual-barrel syringe with a tack-cure feature and high radiopacity. **CR measured high initial fluoride release.**

\$43/5 gram Syringe

See also Clinicians Report January 2025

Core Build-ups

See also Clinicians Report September 2025: “Does Less Equal More when Restoring RCT Teeth?”

Proven Products: Core Build-ups

- ★Absolute Dentin, Parkell (low-cost)
- ★Build-it FR, Pentron
- ★Core Paste XP, Clinician's Choice (division of DenMat)
- Clearfil Photo Core, Kuraray Noritake
- CompCore AF SyringeMix Stack, Premier Dental
- FluoroCore2+, Dentsply Sirona
- MultiCore, Ivoclar
- Visalys Core, Kettenbach



Core Build-Up Material, Brasseler USA

Stackable core build-up material has **dual-cure and cuts like dentin** for easy shaping. Self-cure in less than 4 minutes or light cured in seconds (5 sec with high intensity lights).

\$164/Two 10 gram Syringes and Tips

See also Clinicians Report February 2025

Crown Removers



TempOff, ArtCraft Dental, Inc.

These forceps provide easy and **controlled removal of provisional or permanent restorations.** They have unique foam crown grips that protect final restoration if it needs to be removed. Replacement tips available.

\$170/Forceps

See also Clinicians Report March 2025

Crowns

CR Note: Milled zirconia crowns do not fit as adequately as previous crowns because of spacing by the labs and lack of direct communication between the dentist with the lab.

CR Note: Tetragonal (3Y) zirconia impart a “margin of safety” from fracture not present in the esthetic (cubic containing: 4Y, 5Y, etc.) brands. **Based on clinical studies, CR suggests the following indications:**

- **Tetragonal zirconia (3Y):** 1) molars, 2) posterior multi-units, 3) minimal preps, 4) abusive occlusion, 5) occlusal adjustment expected, 6) endo entry expected, 7) high-risk lifestyle, and 8) maximum longevity wanted
- **Cubic containing and “exceptions” zirconias (4Y, 5Y and higher Y):** If optimum zirconia translucence is demanded by the patient and/or dentist. These have more breakage than tetragonal (3Y) zirconia.

Proven Products: Ceramic

- ★IPS e.max (Class 3, lithium disilicate), Ivoclar (most esthetic)
- CZR PRESS (pressed ceramic), Kuraray Noritake

Proven Products: Gold

- Full-Gold Alloy, Various Companies

– **Zirconia, cubic containing:** ~75% tetragonal phase, ~25% cubic phase (4Y, LT, translucent, esthetic, MT, medium translucent), and **cubic containing** ~50% tetragonal phase, 50% cubic phase (5Y, translucent, esthetic, UT, ultra translucent)

- KATANA Zirconia STML (5Y), Kuraray Noritake
- BruxZir Esthetic (5Y), Glidewell
- 3M Lava Esthetics (5Y), Solventum

– **Zirconia, “exceptions”** claim strength similar to tetragonal zirconia, but CR/TRAC data indicate clinical outcome similar to cubic containing zirconias.

- Alien HT and Alien Multi-Layer, Alien Milling Technologies
- ArgenZ HT+, Argen

– **Zirconia, tetragonal** ~100% tetragonal phase, 0% cubic phase (3Y, LT, low translucent, full strength).

- ★BruxZir Full-Strength, Glidewell (most popular posterior)
- ★IPS e.max ZirCAD LT (3Y), Ivoclar
- Zirlux 16+ (3Y), Zahn Dental



★BruxZir Full-strength, Glidewell Labs

CR BEST OF ALL TIME. Original zirconia ceramic crown and bridge material with 3Y (tetragonal/cubic) formulation for strength and durability.

See also Clinicians Report June 2025



★IPS e.max, Ivoclar

CR BEST OF ALL TIME. Medium translucency lithium disilicate has less gray and more white than other e.max ceramics. **Best choice for a dark tooth if combined with a “cutback” technique.**

See also Clinicians Report June 2025

Finishers/Polishers: Ceramics

See also *Clinicians Report* January 2025: “When and How to Adjust Zirconia Restorations Chairside”

CR Note: After firing, zirconia adjusting, finishing and polishing is difficult and time consuming. To simplify:

- Adjust contact areas first to allow proper and complete seating.
1. Medium grit diamond-impregnated rubber wheel of choice.
 2. Fine grit diamond-impregnated rubber wheel of choice.
 3. Diamond-impregnated polishing paste used on goat hair polishing wheel.
- Adjust occlusion initially before cementation
1. Fine tapered diamond
 2. White stone wheel of choice
 3. Fine grit diamond-impregnated wheel
 4. Diamond polishing paste for proximal surfaces

Proven Products: Ceramics

- ★ **Dialite** and **Dialite Feather Lite**, Brasseler USA
- ★ **DiaShine**, DiaShine
- **All Ceramic Polishers**, Cosmedent
- **Jiffy All Ceramic Polishing Kit**, Ultradent
- **Luster (intraoral) & Luster for Zirconia**, Meisinger
- **OptraFine**, Ivoclar
- **Zircon-Brite**, DVA (Dental Ventures of America)

Proven Products: Zirconia Adjusting and Polishing Kits

- **A.S.A.P. Indirect+**, Clinician's Choice (division of DenMat)
- **David Hornbrook Zirconia Kit**, Diashine
- **eZr**, Garrison Dental Solutions
- **Great White Z Zirconia & Lithium Kit**, SS White
- **ZACBA1 Zirconia and Alumina Bite Adjustment**, Strauss Diamond
- **ZKD4 finishing kit**, Horico (sold through distributors)

Proven Products: Zirconia Polishing Kits

- **OptraGloss Ceramic Kit**, Ivoclar



★ **DiaShine**, DiaShine

Diamond polish for **rapid polish** of **adjusted** (not yet finished) **zirconia**.

\$47/2 gram Syringe

See also *Clinicians Report* January 2025



Abbott-Robinson Wheel, Various Companies

Goat hair polishing wheel. 3/32" will fit both latch and straight handpiece

\$1.11/Wheel

See also *Clinicians Report* January 2025



Dura-White, Shofu

White stone wheel **quickly smooths diamond adjustment marks**.

\$3.04 Each

See also *Clinicians Report* January 2025



Speed Polish, Harvest Dental

Diamond polish for **rapid polish** of adjusted zirconia.

\$53 Each

See also *Clinicians Report* January 2025



Zircon-Brite, DVA

Diamond polish for **rapid polish** of finished zirconia, lithium disilicate, porcelain, and composite.

\$61 Each

See also *Clinicians Report* January 2025

Hemostatic Cord and Soft Tissue Management

Proven Products: Cords

- ★ **GingiBraid+ Shortcut**, Kerr
- ★ **UltraPak**, Ultradent
- **Knit Pak+**, Premier Dental
- **Roeko Stay-Put**, Coltene
- **Z-Twist Weave Retraction Cord**, Gingi-Pak

Proven Products: Hemostasis and Styptics

- ★ **Astringedent**, **ViscoStat**, and **ViscoStat Clear**, Ultradent
- ★ **Hemodent**, Premier Dental
- **Hemoban Gel**, Dentsply Sirona



★ **Astringedent**, Ultradent

CR BEST OF ALL TIME. Solution of ferric sulfate for control of blood and fluid seepage for soft tissue. **When seating an all-ceramic crown, use ViscoStat Clear (aluminum chloride) to avoid margin staining.**

\$49/30 ml Bottle

See also *Clinicians Report* June 2025

Proven Products: Retraction Paste

- **Dryz**, Parkell
- **Expasyl**, ACTEON North America (original)
- **Take 1 Retraction**, Kerr
- **Traxodent**, Premier Dental
- **3M Retraction Capsule**, Solventum (most used, highest rated)

Impressions

See also *Clinicians Report* October 2025: “Digital and Elastomeric Impressions Should Coexist”

Impression Materials, VPS/Polyether

Proven Products:

- ★ **Aquasil Ultra+**, Dentsply Sirona
- ★ **EXA Advanced** (VPS), GC America (lower cost)
- ★ **Splash! Max** (VPS), Clinician's Choice (division of DenMat) (lower cost)
- ★ **3M Impregum Super Quick** (polyether) and **3M Imprint 4** (VPS), Solventum (lower cost)
- **Chromaclone VPS**, Ultradent
- **EXA'lence** (VPES), GC America
- **Flextime** (VPS) and **Xantasil** (VPS-alginate alternative), Kulzer
- **Genie** (VPS), Sultan Healthcare (lower cost)
- **Panasil** (VPS), Kettenbach
- **Reflection VPS Impression Material** (VPS), Patterson (lower cost)
- **Take 1 Advanced** (VPS), Kerr
- **3M Permadyne** (polyether), Solventum
- **Vaccu-sil Impression Material** (VPS), Ho Dental Company (lower cost)
- **Virtual XD** (VPS), Ivoclar



Alginate Substitute, Hexa Dental

Lower cost, VPS alginate-substitute for high accuracy impressions with **ability to pour multiple times**. Higher stability than alginate.

\$18/Two 50 ml Cartridges (18¢/ml)

See also *Clinicians Report* September 2025

Milling Systems (In-Office)

Proven Products:

- ★ **CEREC Primemill**, Dentsply Sirona
- **Glidewell.io**, Glidewell
- **Planmeca Planmill**, Planmeca

Pins

Proven Products:

- ★ **Filhol Filpin** (pure titanium), Engineered Endodontics
- **Nordin Retention Pins**, Nordin SA
- **Stabilok**, Fairfax Dental



DentXpin, Dentistry Elevated

Translucent fiber-optic glass pins are an esthetic alternative to metal pins in anterior restorations. Dentist developed to anchor and reinforce resin-based composite to broken teeth. Quick and easy to use/place.

\$80/Intro Kit with 1 Bur and 10 Pins (\$8.00/Pin)

Posts

CR Note: When a post/core is necessary, CR suggests a tapered fiber-reinforced post such as D.T. Light-Post (RTD Dental). Although the D.T. Light-Post is highlighted because it conserves dentin and has properties close to dentin, a more conservative approach has been introduced: Biolight DRILL-FREE (Synca).

Proven Products:

- ★ **D.T. Light-Post**, RTD Dental
- **C-I White**, Parkell
- **Cure-Thru Integra Post**, Premier Dental
- **EndoSequence Fiber Post**, Brasseler USA
- **FiberKleer and FibreKor**, Pentron (original)
- **Macro-Lock Oval**, Clinician's Choice (division of DenMat)
- **ParaPost Fiber White**, Coltene
- **3M RelyX Fiber Post 3D**, Solventum
- **Unicore**, Ultradent

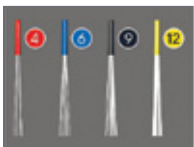


★ D.T. Light-Post, RTD Dental

Popular prefabricated tapered composite-fiber post that require post drill and **allow light to penetrate for light cure of cement.**

\$15.30/Post

See also *Clinicians Report September 2025*



Biolight DRILL-FREE, Synca

Unique micro-post bundles in four sizes are minimally invasive as they require removal of gutta percha and debris (**no post drills are required**).

\$24/Post

See also *Clinicians Report September 2025*

Primers, Cleaners, and Ceramic Etch for Indirect Restorations

CR Note: When an enhanced bond is desired, select primer formulated for the crown material type: MDP for zirconia and metal; silane for glass ceramic. Combination chemistries are versatile but may have slightly lower impact to bond enhancement. See also *Universal Adhesives with MDP and Silane*.

Proven Products: MDP and Silane combined (for glass ceramic, metal, or zirconia)

- ★ **CLEARFIL CERAMIC PRIMER PLUS**, Kuraray Noritake
- ★ **Monobond Plus**, Ivoclar
- **GC Ceramic Primer II**, GC America
- **Premier Universal Primer**, Premier Dental
- **ZR-P Universal Primer**, Vista Apex Solutions

Proven Products: MDP (for metal or zirconia)

- ★ **Z-Prime Plus**, Bisco
- **Peak-ZM**, Ultradent
- **Z-Bond**, Zest Dental Solutions
- **ZR-P Zirconia Primer**, Vista Apex Solutions
- **Zirconia Prime**, Clinician's Choice (division of DenMat)

Proven Products: Silane (for glass ceramic)

- **Calibra Silane**, Dentsply Sirona
- **Porcelain Primer/Bis-Silane**, Bisco
- **Silane**, Ultradent
- **Vitique Silane**, DMG America

Proven Products: Zirconia/Ceramic Cleaner

- ★ **Ivoclean**, Ivoclar (original, basic pH requires thorough rinse)
- ★ **KATANA Cleaner**, Kuraray Noritake (quick, easy)
- ★ **ZirClean**, Bisco
- **ZR-C Universal Cleanser**, Vista Apex Solutions

Provisional Prostheses

Proven Products: Bis-acryl Resins

- ★ **Access Crown**, Centrix (for FPD)
- ★ **LuxaCrown**, DMG America (intermediate long-term provisional)
- ★ **Luxatemp Ultra**, DMG America (Ultra most used)
- ★ **Structur Premium**, VOCO (for crown & FPD)
- ★ **TempSpan**, Pentron (for crown)
- ★ **3M Protemp Plus**, Solventum (esthetic FPD, most used)
- ★ **Visalys Temp**, Kettenbach (for crown)
- **Exacta Temp Xtra**, Exacta
- **Inspire and PerfectTemp II**, Clinician's Choice (division of DenMat)
- **Integrity**, Dentsply Sirona
- **MARK3 C&B Material**, Dental Distributors (lower cost)
- **TempPhase**, Kerr
- **Temporary Crown and Bridge Material**, Patterson

Proven Products: Acrylic Resins/Powder Hand Mix

- **Amco Super-T** (PMMA), Various Companies
- **Jet Tooth Shade** (PMMA), Lang Dental
- **SNAP** (PEMA), Parkell
- **Trim Plus** (PMMA), Keystone Industries



Hexa Crown & Bridge Material, Hexa Dental

Bis-acryl provisional Material from a newer distributor. **Lower cost, fast, and easy initial polish. Accurate shades.**

\$90/50 ml Cartridge (\$1.80/ml)

See also *Clinicians Report July 2025*



Scott's Select CB Plus 10:1, Scott's Dental Supply

Scott's bis-acryl temporary crown and bridge material is dispensed in a 10:1 automix cartridge. It is a **self-cure composite material for crowns, bridges, inlays, onlays, and veneers**. Five shades and natural fluorescence.

\$99.95/50 ml Cartridge (\$1.99/ml)

See also *Clinicians Report May 2025*

Scanners (Digital Impressions)

See also *Clinicians Report* February 2025: “**Intraoral Scanning and Artificial Intelligence (AI)**”

Proven Products: Intraoral Scanners

- ★ **Aoralscan 3**, Shining 3D (lower price)
- ★ **Primescan**, Dentsply Sirona
- ★ **QuickScan IOS**, Denterprise (lower price)
- ★ **TRIOS**, 3Shape
- Various models from the following companies

– Align Technology	– Medit
– DEXIS	– Planmeca



★ **Aoralscan Elite** (Updated Proven Product), Shining 3D Dental

Improved handpiece is **among the smallest and lightest weight**. CR found smooth scanning with excellent detail. Includes intraoral photogrammetry (IPG) function.

\$20,999/System

See also *Clinicians Report* February 2025



★ **Quickscan IOS** (Updated Proven Product), Denterprise International

CR found the lightweight this scanner to have fast and smooth scanning with excellent detail. Includes software tools for various impression needs.

\$9,995/System

See also *Clinicians Report* February 2025



★ **TRIOS** (Updated Proven Product), 3Shape

Cordless handpiece is convenient to maneuver. CR found fast, smooth scanning with excellent detail. (TRIOS 6 is the current model.)

\$25,900/System

See also *Clinicians Report* February 2025



DEXIS IS 3800W, DEXIS

Cordless handpiece is convenient to maneuver or can be operated with cord. CR found fast, smooth scanning with excellent detail. Integrates with DEXIS software.

\$19,999/System

See also *Clinicians Report* February 2025



i900, Medit

Small and lightweight handpiece. **CR found fast, smooth scanning with very good detail**. Includes software tools for various impression needs.

\$18,999/System

See also *Clinicians Report* February 2025



iTero Lumina, Align Technology

Significantly improved multi-camera scanner wand is smaller and lighter than previous models. CR found fast, smooth scanning with excellent detail. Restorative workflow aids diagnostics and best for Invisalign.

\$39,000/System

See also *Clinicians Report* February 2025

Veneers

See *Esthetic Dentistry* on page 3

RADIOLOGY: ORAL & MAXILLOFACIAL

Cone Beam (CBCT)

Proven Products:

- ★ **Green X**, Vatech
- ★ **X-Mind Prime 2 3D**, Acteon
- Various models from the following companies

– Carestream Dental	– DEXIS
– Dentsply Sirona	– Planmeca

Sensors

Proven Products:

- ★ **DC-Air**, FTG (Freedom Technologies Group) (best image quality)
- ★ **DEXIS**, DEXIS
- ★ **Open Sensor**, DentiMax (lower cost)
- ★ **ScanX Intraoral Phosphor Plates**, Air Techniques
- ★ **Schick 33** and **Schick CDR Elite**, Dentsply Sirona
- Various models from the following companies

– Air Techniques	– Sota Imaging
– Carestream Dental	– Vatech
– DentiMax	– XDR Radiology



★ **DEXIS Ti2** (Updated Proven Product), DEXIS

The latest DEXIS intraoral x-ray sensor includes enhanced durability, dynamic range, signal performance, and image processing with high resolution **that can be enhanced with DEXIS software AI tools**.

\$8,000–\$12,322/Sensor (depending on source)

See also *Clinicians Report* October 2025



VisionXR, Benco

Lower-cost size-2 x-ray sensor with rounded corners for positioning and patient comfort. Very good to excellent detail reproduction, clarity, density sensitivity and spatial resolution.

\$5,995/Sensor

See also *Clinicians Report* January 2025

X-Ray Generators, Handheld

See also *Dental Hygiene Clinicians Report* March/April 2025: “**New Economical Handheld X-ray Units**”

Proven Products:

- ★ **EzRay Air P**, Vatech
- ★ **NOMAD Pro 2**, DEXIS



Canis Smart P, iRay Technology

“Camera” grip, 5.4 pound, 70 kV, 2.0 mA, 0.4 mm focal spot unit. Excellent controls: simple x-ray mode; smart mode: touchscreen. **Can also be used as a standalone imaging system with wireless or USB sensors**.

\$3,300/Unit

See also *Dental Hygiene Clinicians Report* March/April 2025

**MobileX R98, Denterprise**

“Camera” grip with neck strap, 5.2 pound, 70 kV, 2.0 mA, 0.4 mm focal spot unit. **Excellent controls: simple LCD screen; presets for both adults and children.**

\$3,295/Unit

See also *Dental Hygiene Clinicians Report March/April 2025*

**X-Vision, Flight Dental Systems**

“Camera” grip with neck strap, 6.3 pound, 60 kV, 2.0 mA, 0.4 mm focal spot unit. **Excellent controls: simple LCD display;** presets for adult/child, teeth, and detector.

\$5,150/Unit

See also *Dental Hygiene Clinicians Report March/April 2025*

RESTORATIVE/OPERATIVE

See also *Clinicians Report November 2025: “Are Cariostatic Restorative Materials Necessary?”*

Adhesives

See also *Clinicians Report May 2025: “Beyond Glutaraldehyde: The Foundation of a Durable Bond”*

CR Note: Generally, multi-bottle and multi-step adhesives have longest clinical success, but take longer to apply; self-etch adhesives have less postoperative sensitivity.

- Single-bottle universal systems have gained popularity due to fewer steps, compatibility for multiple uses, included MDP and silane, and positive initial results.
- Clinicians may choose adhesives based on their preferences. **Be aware of proven degeneration of dentin bond over time.**
- All systems have little to no sensitivity if preceded by two one-minute applications of a HEMA/glutaraldehyde solution (GLUMA, MicroPrime-G, G5; see Desensitizers on page 14).

Proven Products:

- ★ **Adhese Universal, Ivoclar** (lower cost)
- ★ **Brush&Bond MAX, Parkell**
- ★ **CLEARFIL SE BOND 2, Kuraray Noritake** (original 10 MDP monomer)
- ★ **Peak Universal, Ultradent**
- ★ **3M Scotchbond Universal Plus, Solventum** (most used)
- **Add&Bond, Parkell** (bond new resin to old)
- **All-Bond Universal, Bisco**
- **CLEARFIL Universal Bond Quick 2, Kuraray Noritake**
- **G-Premio BOND, GC America**
- **ONE COAT 7 UNIVERSAL, Coltene**
- **OptiBond 360, OptiBond eXTRa Universal, and Optibond FL, Kerr**
- **Prime&Bond active, Dentsply Sirona**

**CLEARFIL Universal Bond Quick 2, Kuraray Noritake**

New version of historically durable, low-sensitivity bonds **now with lower film-thickness, lower viscosity**, and proprietary urethane monomer to minimize pooling for strong uniform bond layer. Has original 10 MDP and silane.

\$188/5 ml bottle (\$37.60/ml)

See also *Clinicians Report January 2025*

Bases/Liners and Pulp Capping

See also *Clinicians Report June 2025: “Capping the Controversy: The Importance of Pulp Capping”*

See also *Endodontics* on pages 2–3

CR Note: Liners are well-proven for insulating/protecting deep dentin and lowering post-op sensitivity. **Pulp capping is a well-established, evidence-based treatment and should be routinely considered as part of a conservative approach to dental care.**

- **RMGI liners** are clinically proven and most used for indirect pulp capping, but have not yet been submitted to FDA for 510K clearance on pulp capping.
- **MTA** is highly suitable for pulp capping, but has been previously criticized for long setting time, poor handling properties, and high cost. Newer MTA materials have improved these challenges.
- See *Clinicians Report June 2025* for CR suggested indirect and direct pulp cap technique.

Proven Products:

- ★ **Endo-Eze MTAFlow White** (MTA), **Ultradent** (effective pulp cap)
- ★ **EQUIA Forte** (GI restorative often used as base)* and **GC Fuji Lining LC** (RMGI), **GC America** (*effective dentin replacement)
- ★ **3M Vitrebond Plus** (RMGI), **Solventum** (most used, effective liner)
- **Biodentine** (calcium silicate-based), **Septodont**
- **Ceramir Protect LC Syringe** (calcium aluminate and methacrylate), **Directa**
- **Dycal (Calcium hydroxide)**, **Dentsply Sirona**
- **NeoMTA 2** (MTA) and **NeoPUTTY** (MTA), **Avalon Biomed**
- **TheraCal LC and TheraBase** (calcium silicate), **Bisco**

**Axio Glass, AXIOdent**

Lower-cost, single-component RMGI liner. Viscosity and flow make placement easy and quick process with light cure.

\$25/2 g Syringe, 5 tips, and instructions

See also *Clinicians Report February 2025*

Bioactivity

See also *Clinicians Report August 2025: “What does Bioactivity do for your Patients?”*

CR Note: Bioactive products have substances that interact with biologic systems to produce a positive response. Proven bioactive categories in dentistry:

- Bioactive glasses, ceramics, polymers
- Metallic bioactive materials
- Combinations of the above
- Peptides and protein-based materials

Burs, Carbide

See also *Clinicians Report August 2025: “Carbide Bur Comparison—2025”*

Proven Products:

- ★ **BrioPrep Carbide, Brasseler USA**
- ★ **Carbide Bur, SS White Dental**
- ★ **Midwest Once, Dentsply Sirona**
- ★ **NeoBurr, Microcopy**
- ★ **Ohio Forge, Maxill**
- ★ **Single-Use Carbide Bur, Henry Schein**
- **Various bur designs from the following companies**
 - Brasseler USA
 - Dentsply Sirona
 - Kerr
 - Meisinger
 - Microcopy
 - SS White Dental

Burs, Diamond

See also *Clinicians Report* May 2025: “Single-use Diamonds for Cutting Teeth and Zirconia”

Proven Products: Diamonds, Premium, Multi-use

★**Two Striper, Premier**

Proven Products: Single-Use, Under \$2/Bur

★**NeoDiamond, Microcopy**

- **Alpen X1, Coltene**
- **BrioPREP, Brasseler USA**
- **D1amond Burs, Safco** (lower cost)
- **Dollar Diamond, Dollar Diamonds**
- **Dr. Friendly, MDT/Pearson** (lower cost)
- **EdgeBurs Single Patient-Use Diamonds, EdgeEndo**
- **Optimum Single-Use Diamond, Benco**
- **Safe Drill Diamond Burs, Microdont/Pearson** (lower cost)
- **Single-Use Diamonds Burs, Henry Schein**
- **Singles, Meisinger**
- **Tempo, Strauss Diamond**
- **Vivid SteriCut, Pearson**

Cement

See *Prosthodontics, Fixed/Removable* on pages 7–12

Curing Lights, Resin

See also *Clinicians Report* April 2025: “First Look: New Curing Light Technology—Is It Better?”

CR Note: Today’s highest intensity lights are very bright: eye protection must be used. Exercise caution to avoid overheating oral tissues and pulp by using air from syringe while curing.

Proven Products: LED Curing Lights

★**VALO Grand** and ★**VALO X, Ultradent** (VALO models: most used, durable, high intensity)

- **Fusion 5, DentLight**
- **Monet, AMD Lasers** (diode laser)
- **Various models from the following companies**
 - DentLight
 - Ivoclar
 - Dentsply Sirona
 - Solventum
 - GC America



★**VALO Grand, Ultradent**

CR BEST OF ALL TIME. LED curing light has desirable features (12.7 mm/90° tip, high intensity = 2,400 mW/cm², 3 watts output power) and **received highest overall rating in CR comparison.**

\$1,900/LED Curing Light

See also *Clinicians Report* June 2025



Loop, Garrison Dental Solutions

First light with feedback to self-check output, calibrate performance, auto-start feature, drift correction, and output adjustment during exposure. Alerted users to common errors and helped ensure consistent delivery of energy.

\$1,950/Light and Accessories

See also *Clinicians Report* April 2025

Desensitizers: Preparation Disinfection

See also *Clinicians Report* May 2025: “Beyond Glutaraldehyde: The Foundation of a Durable Bond”

CR Note: Desensitizing and Disinfecting Tooth Preparations. The application process is simple: after etch and wash, desensitize **with two 1-minute applications** of MicroPrime G, GLUMA, or other similar products (5% glutaraldehyde and 35% HEMA). Suction off any residual; *air blowing contaminates the disinfected surface and blows chemistry on to soft tissues where it can burn.* If deep preparation, use a GI, RMGI, or other liner. The positive results of incorporating this concept into your practice rapidly becomes a reality. Your patients, you, and your staff benefit from this procedure.

Proven Products: Glutaraldehyde 5%/HEMA 35

- ★**G5, Clinician’s Choice** (division of DenMat) (lower cost)
- ★**GLUMA Desensitizer, Kulzer** (original formulation)
- ★**Glu/Sense, Centrix**
- ★**MicroPrime G and MicroPrime Gel, Zest Dental Solutions** (lower cost)
- **DesensiMAX, Vista Apex Solutions**



★**G5, Clinician’s Choice** (division of DenMat)

Glutaraldehyde 5%, HEMA 35%, desensitizer **provides immediate and lasting results.** Tested significantly higher bond than adhesive alone.

\$163/10 ml Bottle (\$16.30/ml)

See also *Clinicians Report* May 2025



★**GLUMA Desensitizer, Kulzer**

CR BEST OF ALL TIME. Original glutaraldehyde 5%, HEMA 35%, desensitizer **provides immediate and lasting results.** Provides proven disinfection of tooth preparation surface (keep off soft tissues).

\$196/5 ml Bottle (\$39/ml)

See also *Clinicians Report* May and June 2025



★**Glu/Sense, Centrix**

Glutaraldehyde 5%, HEMA ~35%, desensitizer **provides immediate and lasting results.** Tested significantly higher bond than adhesive alone.

\$210/Six 1 ml Syringes (\$35/ml)

See also *Clinicians Report* May 2025



★**MicroPrime G and MicroPrime Gel, Zest Dental**

Glutaraldehyde 5%, HEMA 35%, desensitizer **provides immediate and lasting results.** Tested significantly higher bond than adhesive alone.

\$152/10 ml Bottle (\$15.19/ml)

Gel: \$106/Four 1 ml Syringes (\$27/ml)

See also *Clinicians Report* May 2025



Glutaraldehyde Desensitizer, Henry Schein

Glutaraldehyde 5%, HEMA HEMA ~35%, desensitizer **provides immediate and lasting results.** Most cost effective option.

\$56/10 ml Bottle (\$5.58/ml)

See also *Clinicians Report* May 2025

Glass Ionomer Restoratives

CR Note: Glass ionomers provide highest fluoride release for prevention and **chemical bond (chelation) to tooth structure** minimizing bacterial ingress.

Proven Products:

- ★EQUIA Forte, GC America
- ★3M Ketac Universal Aplicap, Solventum
- Ionostar Plus, VOCO
- Riva Self-Cure Glass Ionomer Restorative, SDI

Handpieces: Air-Driven

Proven Products:

- ★430SWL Torque LubeFree, DentalEZ
- 557 ProStyle SF Lite SLC and LEGACY 5, Lares Research
- MASTERtorque, KaVo
- Maxso M200E, Beyes Dental Canada (lower cost, excellent but no swivel or light)
- Midwest Stylus Plus, Dentsply Sirona
- Ti-Max Z800L, NSK
- Tornado, Bien-Air
- XLR8 Plus, Benco

Handpieces: Electric

See also *Clinicians Report July 2025*: “Do Low-cost Electric Handpieces Function Well?”

Proven Products: Electric Attachments

- ★Ti-Max nano95LS (light weight, small head/neck), Ti-Max Z85L (light weight, small head/neck), and Ti-Max Z95L (light weight, small head/neck), NSK
- CA NOVA 1:5L MS (short length, small head/neck), Bien Air
- Forza M5 (light weight, short length, small head/neck), Brasseler USA
- Midwest Ergo (light weight), Dentsply Sirona
- Smoothdrive Contraangle, Lares Research
- Synea Vision WK-93 LT S (short length), W&H
- TORQTECH CA-51F-O-UM (small head/neck), Morita



JoyDental 1:5 High-Speed Attachment, AzDENT

Lowest cost attachment. Repetitive cycles of cut/lubrication/sterilization demonstrated adequate function with good torque, speed control, and smooth operation. Service potential unknown.

\$94/Attachment

See also *Clinicians Report July 2025*

Proven Products: Electric Motor Systems

- ★ELECTROmatic, KaVo
- ★OPTIMA MCX Set, Bien-Air
- ★Ti-Max and NLZ Micromotor System, NSK (lower cost)
- Smoothdrive, Lares Research
- WOLF Electric Micromotor, Dental Savings Club



Dental LED Brushless Micro Motor, AzDENT

Low-cost electric handpiece motor with surprisingly acceptable clinical performance in accelerated testing. Service potential unknown.

\$261/System

See also *Clinicians Report July 2025*

Headlight/Headlamp

Proven Products:

- ★WaveLUX, LumaDent (lower cost)
- Various models from the following companies
 - ★Designs for Vision – Clinician’s Choice (division of DenMat)
 - ★Orascope – DentLight
 - ★SurgiTel – Univet
 - ★Ultralight Optics



Butterfly-S EVO Headlamp, Andau Medical

Cordless headlight with long battery life, lightweight. Easy-to-use magnetic attachment facilitates quick battery changes.

\$1,256/Unit

See also *Clinicians Report February 2025*

Matrices/Wedges

CR Note: Newest wedges are designed to better stay in place with fins or shapes that adapt to facial and lingual in addition to separating teeth and holding matrix.

Proven Products:

- ★Bioclear Biofit (anterior anatomical contour), Bioclear Matrix System
- ★Composi-tight (various), NiTin Sectional Matrix System, Quad Matrix System, and Fender Wedge, Garrison Dental
- ★Greater Curve, Brass Bands (Tofflemire type), Greater Curve
- AutoMatrix, Palodent Plus, and Wedgeguard, Dentsply Sirona
- Contact Matrix, Zest Dental Solutions
- DualForce Active-Wedge, Clinician’s Choice (division of DenMat)
- iMatrix, Pac-Dent
- 9-Micron Mylar Matrix, Ho Dental Company
- Triodent V3 and WedgeGuard, Ultradent
- Ultra-Thin Tofflemire Matrix Bands, Cosmedent



★Quad Matrix System (Updated Proven Product), Garrison Dental Solutions

Sectional matrix kit **designed for complex, deep, back-to-back, and multi-tooth restorations** with asymmetrical Quad Rings and split wedges in a variety of heights and shapes.

\$650/Intro Kit

See also *Clinicians Report October 2025*



Adjustable Push-Pull, Bioclear

Matrix instrument that helps **establish tight contacts on direct restorations.** Designed to push distally or pull mesially on a sectional matrix for tight contacts.

\$95/Instrument

See also *Clinicians Report September 2025*



Evolve Matrix All-in-One Kit, Bioclear

Matrix system with **three shapes of matrices with multiple heights and shapes.** Kit is complete, with color coded matrices for quick identification.

\$745/Kit (including Push-Pull)

See also *Clinicians Report September 2025*

Moisture Control/Isolation/Rubber Dam

Effective Moisture Control Concepts:

- ★ **Isolite Pro and Isolite Core**, Zyris
- ★ **OptraGate** (small, regular, and junior), Ivoclar (easy, effective, anterior access)
- **Dentapops**, Dentapops
- **DryShield**, Solmetex
- **Microbrush DryTips**, Youngs Specialties
- **Mr. Thirsty**, Zirc Dental
- **NeoDrys**, Microcopy

Proven Products: Rubber Dam

- ★ **HySolate** (latex and non-latex) and **FlexiDam**, Coltene
- ★ **Traditional rubber dam**, Various Companies
- **Smart Dam** (latex free), Cranberry



★ **Isolite Pro**, Zyris

CR BEST OF ALL TIME. Isolation system that provides **moisture control, tissue protection, and illumination.** Connects to standard suction lines.
\$2,210/System

See also Clinicians Report June 2025



★ **OptraGate 2 (Updated Proven Product)**, Ivoclar

Highly popular lip and cheek retraction device with **improved retraction and patient comfort.** Stays in place and **retracts cheeks better than original version.**

\$161/Box of 80 (\$2.01 each)

See also Clinicians Report October 2025



Hoopla Retractor, Zyris

One piece lip and cheek biodegradable retractor opens oral cavity and is easy to use and comfortable. **Improves access and isolates lips from teeth.**

\$68/Pack of 40 (\$1.70/Retractor)

See also Clinicians Report July 2025



LockNFold, Nuevotek Intelligent Solutions

Adjustable, folding dental dam frame can enhance workflow with **improved access and patient comfort.** Either side of frame can fold out of the way.

\$59/Frame

See also Clinicians Report November 2025

Pulp Capping/Pulpotomy

See Bases/Liners on page 13

Resin-Based Composite Restoratives

See also Clinicians Report February 2025: “Ensuring Class II Resins are Not Second-Class Financially”

CR Note: Direct resin-based composites are the most common dental restorations in North America today. The average general dentist accomplishes 3 to 15 of these each practice day. CR has published several ways to accomplish these essential restorations with the highest quality and greater profitably.

Proven Products: Light-Cure

- ★ **OMNICHROMA (one shade)**, Tokuyama
- ★ **3M Filtek Supreme Ultra Universal (8 shades)**, Solventum
- **Aura**, SDI
- **BulkeZ**, Zest Dental Solutions
- **CLEARFIL MAJESTY**, Kuraray Noritake
- **Estelite Sigma QuickESTELITE and sigma QUICK**, Tokuyama
- **G-aenial A'Chord and Kalore**, GC America
- **Renamel NANO Plus and Renamel Microfill**, Cosmedent
- **SimpliShade (3 shades) and SimpliShade Bulk Fill**, Kerr
- **TPH Spectra ST**, Dentsply Sirona
- **Tetric EvoCeram**, Ivoclar
- **3M Filtek One Bulk**, Solventum
- **Transcend**, Ultradent
- **Venus Pearl**, Kulzer



E-On Single Shade, Benco

One shade, lower-cost composite restorative has effective shade match, easy initial polish, and good consistency for handling.

\$4.00/Capsule

See also Clinicians Report July 2025



3M Filtek Easy Match Universal Restorative, Solventum

Popular resin-based composite with simplified shades. **The Natural shade matches the majority of cases.** For the rest, select the complementary Bright and Warm shades which adapt to shade of surrounding tooth.

\$369/20 Each of 3 Shades (60 total)

\$136/Refill with 20 of 1 Shade

See also Clinicians Report April 2025

Resin-Based Composite Restoratives: Flowables

CR Note: Flowable resins are best used for small restorations, sealants, temporary crown repairs, etc. Although formulations have improved, in general **they still have higher shrinkage and lower physical properties than conventional composites**, making them less than ideal for use as liners under restorations, or as enamel replacement layers in high-wear, large, or stress-bearing restorations.

Proven Products: Light-Cure Flowables

- **BeautiFill Flow Plus and FIT SA**, Shofu
- **G-aenial Universal Injectable and G-aenial Universal Flo**, GC America
- **OMNICHROMA Flow and Estelite Universal Flow**, Tokuyama
- **Natural Elegance Premium Flow**, Henry Schein (lower cost)
- **SDR Flow+**, Dentsply Sirona Restorative
- **Simplishade Bulk Fill Flow**, Kerr Dental
- **Tetric EvoFlow**, Ivoclar
- **3M Filtek Supreme Flowable Restorative**, Solventum



CLEARFIL MAJESTY ES Flow Universal, Kuraray Noritake Dental

This high viscosity light cure flowable composite (78% filled) for **increased physical properties** and with “light diffusion” filler matrix that allows one-shade U for VITA A1, A2, and A3 shades and UD shade for A3.5 and A4 darker teeth.

\$84/1.5 ml syringe (\$55.57/ml)

See also Clinicians Report March 2025



SDR Flow+, Dentsply Sirona Restorative

Popular bulk-fill flowable **with improved wear resistance, radiopacity, and shades**. May be placed and light cured in 4 mm increments. Low polymerization shrinkage stress.

\$66.46/Two 1-gram Syringes

See also *Clinicians Report August 2025*

Resin, Dual-Cure Restoratives

See also *Clinicians Report March 2025*: “Where are Dual-Cure (DC) Resins Helpful for Restorative Dentists?”

CR Note: Dual-cure (DC) resin can solve the need for a more complete cure, but most DC resins appear to have significant challenges limiting clinical usage. **When fast placement of a bulk composite is necessary, as in behavioral management challenges or where thorough polymerization (via light) is in doubt, DC materials can prove helpful.**

Proven Products: Dual-Cure

- ★ **HyperFIL DC**, Parkell (lower cost)
- ★ **LuxaCrown**, DMG America
- **ACTIVA BioACTIVE**, Pulpdent
- **BulkEZ**, Zest Dental Solutions
- **Fill-Up!**, Coltene



ACTIVA BioACTIVE Bulk Flow in ShadeFusion, Pulpdent

Bioactive bulk-flow, flowable, resin-based composite with universal shade. **Updated, dual-cure**, ionic-polymer-matrix-(ION-X)-based formula with increased filler loading. Minimized shrinkage stress.

\$110/5 gram Syringe (\$36.65/ml)

See also *Clinicians Report March and October 2025*



Bulk EZ Plus, Zest Dental Solutions

Fastest set of the dual-cure composite resins tested by CR. May be ideal for cases with behavioral management challenges or where thorough polymerization (via light) is in doubt.

\$97/6 gram Syringe (\$29.43/ml)

See also *Clinicians Report March 2025*



Evanescence Bulk Cure, Clinician's Choice (division of DenMat)

Of the dual-cure resins tested, it had the best mix of handling properties, cost, and physical properties, and **appears to be the current category leader.**

\$90/Kit (\$26.86/ml)

See also *Clinicians Report March 2025*



HyperFIL+, Parkell

Newest version of popular dual-cure, bulk-fill resin composite. **Has zirconia nanofillers for improved mechanical strength.** Dispensed from a dual-barrel syringe.

\$72/2.5 ml Syringe

See also *Clinicians Report November 2025*

Resin Heaters

See also *Clinicians Report November 2025*: “Warming Composite Resin to Improve Handling”

Proven Products:

- ★ **Calset**, AdDent



Calset with MultiPRO tray (Updated Proven Product), AdDent

Popular countertop heater with multiple temperature settings (37, 54, 68° C) and warming tray options for variety of procedures.

\$598

See also *Clinicians Report November 2025*



Caps Warmer, VOCO

Versatile countertop heater with multiple temperature settings (37, 54, 68° C).

\$722

See also *Clinicians Report November 2025*



Compex HD (Heated Dispenser), AdDent

Heated dispensing gun for individual capsules (68° C). Approximately 60 second heating time. Cordless with >400 minutes of battery life.

\$698

See also *Clinicians Report April 2025 and November 2025*



Filtek Composite Warmer, Solventum

Small countertop heater at 68° C. Holds capsules and small syringe. Approximately 50 second heating time. Full-coverage silicone sleeve for handling.

\$399

See also *Clinicians Report November 2025*



Phasor, Vista Apex Solutions

Heated dispensing gun for individual capsules. Four temperature settings ~55, 60, 65, 70° C. Approximately 45 second heating time. Cordless with >30 minutes of battery life.

\$724

See also *Clinicians Report November 2025*



VisCalor Dispenser, VOCO

Heated dispensing gun for individual capsules. Two temperature settings ~65, 70° C. Approximately 20 second heating time. Cordless with >30 minutes of battery life.

\$1,202

See also *Clinicians Report November 2025*

Veneers, Direct Placement

See *Esthetic Dentistry* on page 3

SLEEP MEDICINE, DENTAL

See also *Clinicians Report* February 2025: “Looking Beyond the Teeth and Potentially Saving Lives: The Dentist’s Role in Sleep-Related Breathing Disorders”

CR Note: Screening for and helping patients acquire care for their sleep-related breathing disorders could literally save lives, dramatically improve your patient’s quality of life, and improve the quality of life of their bed partners. Learning dental sleep medicine procedures requires some additional education, time, and money. But it is one of the activities that will excite you and your staff, will serve 40% to 50% of your patients, and help keep YOU increasing your interest and expertise in the profession.

Proven Products: Mandibular Advancement Appliances

- ★ **dreamTAP*** and **TAP 3**, Various Labs (*for bruxers, keeps mouth closed)
- ★ **Silent Nite**, Glidewell (most used)
- **Dorsal**, Various Labs
- **EMA**, Various Labs
- **Herbst Sleep Appliance**, Various Labs
- **Prosomnus**, Various Labs
- **Respire**, Various Labs
- **SomnoDent Classic**, Various Labs

SURGERY, ORAL & MAXILLOFACIAL

See also *Clinicians Report* March 2025: “Simple Alveoplasty when Removing Multiple Teeth”

CR Note: Dentists who routinely perform surgery should become competent at alveoplasty. The reasons for smoothing bone following extractions include a better prosthesis and a much improved patient experience.

Proven Instruments for Alveoplasty:

- **Blumenthal 30° rongeur**, HuFriedyGroup
- **Slow-speed or surgical straight with 703 bur**, Various Companies
- **Surgical bur for a straight handpiece (44.5 mm long burs)**, Various Companies
- **Surgical high-speed with rear air exhaust from**
 - Aseptico
 - Brasseler USA
 - Hall
 - W&H
 - ZimVie
- **2X bone file**, HuFriedyGroup

Bone Grafting Materials and Membranes

Proven Products: Allograft (human derived)

- ★ **Infuse Bone Graft** (recombinant human bone Morphogenetic Protein-2), **Medtronic**
- **alloOss Putty** (putty demineralized bone with cancellous chips), **ACE Southern**
- **DynaBlast** (demineralized cancellous bone), **Salvin**
- **MinerOss Putty, blend** (mineralized cortical and cancellous chips), **BioHorizons**
- **Puros** (putty, demineralized freeze dried cortical/cancellous), **ZimVie**

Proven Products: Alloplast (synthetic, ceramic, polymers, composites)

- ★ **Bio-Oss** (sterile, biocompatible porous bone mineral substitute), **Geistlich**
- ★ **NovaBone Dental** (calcium phosphosilicate), **NovaBone**
- **GUIDOR easy-graft** (100% synthetic, fully resorbable), **Collagen Matrix**

Proven Products: Xenograft (cow or pig bone or cartilage)

- ★ **Infuse Bone Graft** (growth factor enhanced), **Medtronic**
- **Bio-Oss** (collagen and bone mineral substitute), **Geistlich**
- **HeliPlug**, **Miltex**
- **XenoGraft** (bovine bone), **Straumann**

Proven Products: Membrane

- **Bio-Gide** (resorbable collagen membrane), **Geistlich**
- **Cytoplast TXT-200 PTFE** (membrane), **Osteogenics**

Proven Products: Bone Graft Plugs

- ★ **OsteoGen Plug** (80% bioactive resorbable calcium apatite, 20% bovine Achilles tendon collagen matrix), **Impladent**
- ★ **Synthetic Composite Plug**, **Maxxeus**
- **FulFill** (80% calcium phosphate granules/20% bovine collagen), **Salvin**
- **MinerOss XP** (80% highly porous inorganic porcine bone mineral matrix, 20% xenograft collagen), **BioHorizons**
- **OsteoPlug** (80% calcium phosphate granules, 20% bovine collagen), **Implant Direct**
- **Z-Core Expand** (80% xenograft particulate, 20% xenograft collagen), **OsteoGenics Biomedical**



Gibson HealthCare Bone Graft Plug, Benco

Easily accomplished guided bone grafting material with collagen and synthetic mineral for scaffold. Two sizes.

\$251/Box of 5 Plugs (\$50.20/Plug)

See also *Clinicians Report* September 2025

Exodontia

See also *Clinicians Report* July 2025: “Making Good Flaps Can Elevate Your Practice”

CR Note: Dentists who learn and accomplish surgical flaps will find that everyday routine exodontia is easier with less patient discomfort, swelling, and/or bleeding, thus enhancing your reputation for quality care.

Proven Products: Instruments Helpful for Flaps

- **Molt #9 Periosteal Elevator**, Various Companies
- **Retractor Minnesota**, Various Companies
- **Seldin 23**, Various Companies

Instruments

Proven Products: Elevators, Luxators, Proximators, and Forceps

- **Magnetic Mallet** (innovative alternative to surgical mallets, chisels, osteotomes, elevators, and “skinny bur” osteotomy), **Osseotouch** from **Dental Enterprises LLC**
- **Various instruments from the following companies**
 - ★ **Directa**
 - Ace Southern
 - Henry Schein
 - HuFriedyGroup
 - Integra Miltex
 - Karl Schumacher
 - Salvin



★Luxator, Directa

CR BEST OF ALL TIME. Extraction instrument with thin tip, tapered elevator for vertical luxation. Used in PDL severance, socket expansion, and atraumatic extractions.

\$178/Each

See also *Clinicians Report* June 2025



elvatome 2.0, TBS Dental

Curved, spade-type elevator with 3.5×6.5×1.5 mm tip size to separate ligament attachments. Used to elevate from within the PDL space or create space for another extraction instrument.

\$230/Instrument

See also *Clinicians Report* May 2025

Socket Treatment and Wound Healing

Proven Products: Collagen Plugs

- ★ **OraPLUG** (collagen plug), **Salvin**
- ★ **OSSIX** (cross-linking collagen), **Dentsply Sirona**
- **CollaPlug** (collagen plug), **Zimmer**
- **Foundation** (bone-precursor, collagen), **Morita**



Ora-Aid, Above-All-Alliance

Effective, self-adhesive, protective dressing material for intraoral wounds. Covers and creates ideal conditions for rapid healing. May cut dressing to desired shape and size.

\$99/Box of 20 each 25×15 mm Dressing
(\$4.95/Dressing)

See also Clinicians Report February 2025

Sutures

Proven Products:

- **Chromic Gut**, Various Companies
- **PGA** (polyglycolic acid), Various Companies
- **PTFE** (polytetrafluoroethylene), Various Companies



RASTORO (Polyglycolic Acid), Kollsut USA

Lower cost and well received polyglycolic acid (PGA) suture in dyed or undyed and needle options. Unique and somewhat delayed ordering by email: info@kollsut.com; can be slow to respond.

\$123.66/12 Sutures (\$10.31/Suture on Needle)

See also Clinicians Report March 2025

How Does CR Test Products?

Every year Clinicians Report publishes an annual guide listing many of the best products for the upcoming year *based on CR testing and clinical evaluations*. The products presented in this report have been through rigorous, independent, non-manufacturer-sponsored evaluation and testing.

CR conducts research at three levels:

1. **Product evaluation** among 400 actively practicing dentists as clinical evaluators in their own offices worldwide.
2. **Science** laboratory testing in CR's extensive facilities and the CR Dental Test Clinic at the University of Utah.
3. **Controlled long-term clinical restorative research** completed by CR and TRAC Clinical Studies.



PARK CITY, UTAH
FEBRUARY 6-7, 2026

Gordon J. Christensen
Dentistry Update®

50 YEAR

50th Anniversary Gala
Dinner & Fundraiser

★ STANDOUT PRODUCTS

PROVEN PRODUCTS

HIGHLY RATED NEW PRODUCTS

INDEX

Adhesive resin cement	8	Diagnosis and treatment planning.....	2	Masks, surgical.....	4	restoratives	16
Adhesives	13	Diamond burs.....	14	Materials, bone grafting.....	18	Resin-based composite restoratives, flowables.....	16–17
Air compressor.....	4	Digital impressions	12	Materials, impression.....	10	Resin-modified glass ionomer cement.....	8–9
Air-driven handpieces.....	15	Disinfection, prep.....	14	Matrices, wedges.....	15	Resin, dual-cure restoratives.....	17
Air powder polishers.....	6	Dual-cure restoratives, resin	17	Medications, pain.....	5	Restorative, glass ionomer.....	15
Air purification.....	4	Education, patient	5	Membranes.....	18	Restorative, operative	13–17
Aligners.....	5	Education, self and team	5	Milling systems.....	10	Restoratives, resin-based composite.....	16
Alveoplasty	18	Electric handpieces	15	Moisture control, isolation, rubber dam.....	16	Restoratives, resin-based composite, flowables.....	16–17
Anesthetics and accessories	2	Endodontics.....	2–3	Monitors, sterilizer	4	Restoratives, resin, dual-cure.....	17
Appliances, mandibular advancement	18	Endodontic cements, sealers.....	3	Operative, restorative.....	13–17	Retraction paste.....	10
Attachments, implant.....	3	Esthetic dentistry.....	3	Oral and maxillofacial radiology	12–13	Rinses, oral.....	7
Bases, liners, pulp capping.....	13	Esthetic resin cement	8	Oral and maxillofacial surgery..	18–19	Rubber dam, moisture control.....	16
Best products of all time	2	Etch, ceramic.....	11	Oral cancer screening.....	2	SDF	5
Bioactivity.....	13	Exodontia	18	Oral hygiene, preventive dentistry.....	6–7	Scanners, digital impressions.....	12
Bleaching	3	Eye protection	4	Oral rinses	7	Screening, cancer, oral	2
Bone grafting	18	Finishers, polishers, ceramics	10	Orthodontics.....	5	Sealants	7
Build-ups, core.....	9	Finishing and reduction, interproximal.....	5	Pain medications	5	Sealers, endodontic cements	3
Burs, carbide	13	Floss, interdental cleaners.....	6–7	Patient education.....	5	Self education.....	5
Burs, diamond.....	14	Flowables, resin-based composite restoratives	16–17	Pediatric dentistry	5	Self-adhesive resin cement	8
Burs, endodontic	2	Fluoride dentifrice.....	6	Periodontics.....	5	Sensors, radiology.....	12
CBCT	12	Fluoride, silver diamine	5	Pharmacology	5	Shade taking.....	3
Cameras, clinical.....	2	GI cement.....	8	Pins.....	11	Silver dimaine fluoride	5
Cameras, intraoral video	2	Glass ionomer cement.....	8	Polishers, air powder.....	6	Sleep medicine.....	18
Cancer screening, oral.....	2	Glass ionomer restoratives.....	15	Polishers, finishers, ceramics.....	10	Socket treatment.....	19
Caps, surgical.....	4	Grafting, bone	18	Polyether, VPS, impression materials.....	10	Soft tissue management	10
Carbide burs	13	Handheld x-ray.....	12–13	Posts	11	Software, practice management.....	5
Cement, glass ionomer.....	8	Handpieces, air-driven	15	Practice management	5	Sterilizer monitors.....	4
Cement, provisional	8	Handpieces, electric	15	Practice management software	5	Sterilizers.....	4
Cement, resin-modified glass ionomer	8–9	Handpieces, endodontic	3	Preparation disinfection	14	Surgery, implants	3
Cement, resin, adhesive	8	Handpieces, surgical	18	Preventive dentistry, oral hygiene.....	6–7	Surgery, oral and maxillofacial	18–19
Cement, resin, esthetic, veneer	8	Headlamps.....	15	Primers, cleaners, ceramic etch.....	11	Surgical caps	4
Cement, resin, self-adhesive	8	Headlights	15	Printing, 3D.....	4	Surgical masks	4
Central vacuum pump.....	4	Healing, socket treatment.....	19	Prostheses, provisional.....	11	Sutures.....	19
Ceramic etch, cleaners, primers.....	11	Heaters, resin.....	17	Prosthetic implants.....	3	Systems, milling.....	10
Ceramic finishers, polishers.....	10	Hemostasis	10	Prosthodontics, fixed, removable.....	7–12	Team education	5
Cleaner, denture and appliance.....	6	Hemostatic cord	10	Protection, eye.....	4	Technology, laboratory.....	4
Cleaners, interdental, floss.....	6–7	Implant attachments.....	3	Protective clothing	4	3D printing.....	4
Cleaners, primers, ceramic etch.....	11	Implants, prosthodontic.....	3	Provisional cement.....	8	Tissue regeneration	5
Cleaners, ultrasonic.....	4	Implants, surgery.....	3	Provisional prostheses.....	11	Titanium implants	3
Clinical cameras.....	2	Implants, titanium	3	Pulp capping, bases, liners.....	13	Toothbrushes	7
Clothing, protective.....	4	Impression materials, VPS, polyether	10	Purification, air	4	Toothpastes, dentifrices.....	6
Composite, resin-based restoratives	16	Impressions	10	RMGI cement.....	8–9	Treatment planning and diagnosis ...	2
Composite, resin-based restoratives, flowables.....	16–17	Impressions, digital, scanners	12	Radiology, oral and maxillofacial	12–13	Treatment, socket	19
compressor, air	4	Infection control.....	4	Reduction and finishing, interproximal.....	5	Ultrasonic cleaners.....	4
Cone beam	12	Instruments, surgery.....	18	Removable appliance cleaner	6	Vacuum pump, central	4
Cord, hemostatic	10	Interdental cleaners, floss.....	6–7	Removers, crown	9	Veneer resin cement	8
Core build-ups.....	9	Interproximal reduction and finishing	5	Resin cement, adhesive.....	8	Veneers.....	3
CR's best products of all time	2	Intraoral video cameras.....	2	Resin cement, esthetic, veneer	8	Video cameras, intraoral	2
Crown removers.....	9	Isolation, moisture control	16	Resin curing lights	14	VPS, polyether, impression materials.....	10
Crowns	9	Laboratory technology	4	Resin heaters	17	Warmers, resin	17
Curing lights, resin.....	14	Lights, curing.....	14	Resin-based composite restoratives	16	Wedges, matrices	15
Dentifrices, toothpastes.....	6	Liners, bases, pulp capping.....	13	Resin-based composite restoratives, flowables.....	16–17	Wound healing	19
Denture, removable appliance cleaner	6	Local anesthesia.....	2	Resin-based composite restoratives, resin, dual-cure.....	17	X-ray generators, handheld.....	12–13
Desensitizers, preparation disinfection.....	14	Management, practice	5	Resin-based composite restoratives, resin, self-adhesive.....	8	Xerostomia.....	7
		Mandibular advancement appliances.....	18				